

HEATING PIPEWORK THROUGH THE WALL INSULATIONS KIT

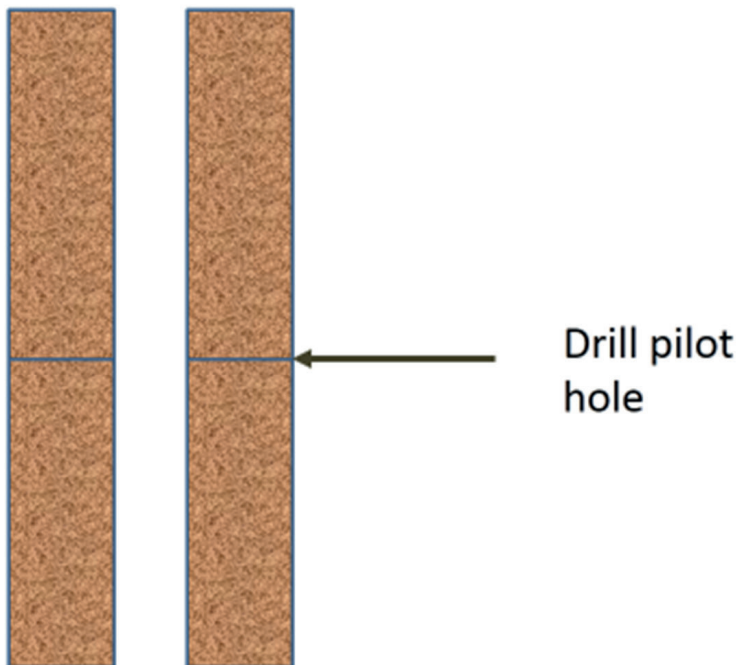
TO SUIT 22MM AND 28MM PIPEWORK

INSTRUCTIONS

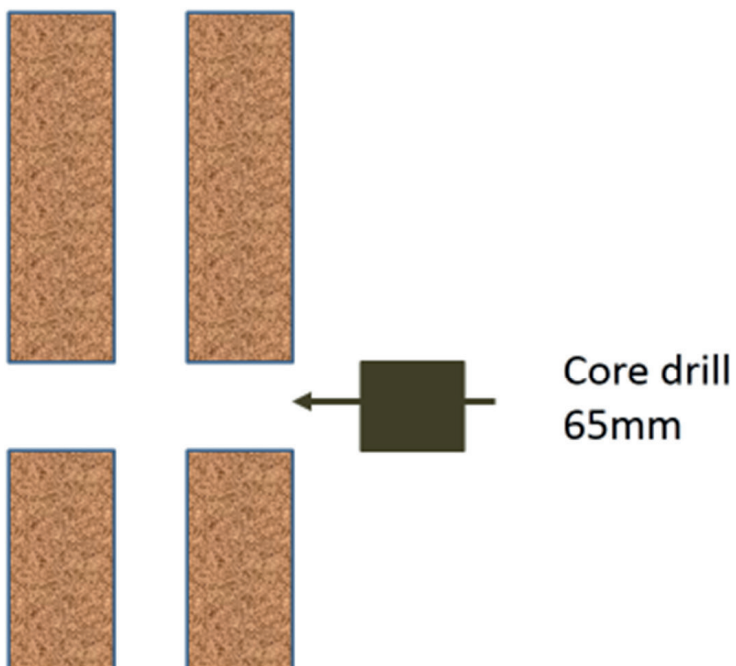
■ KIT CONTENTS

- 2 X PVC SLEEVED INSULATION STRAIGHT SECTION
- 2 X PVC SLEEVED CORNERS

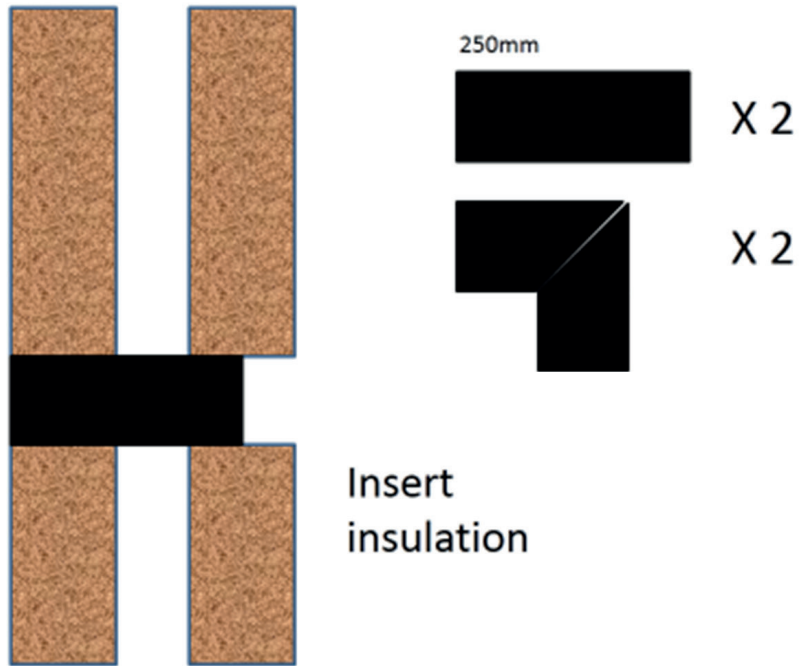
Step 1



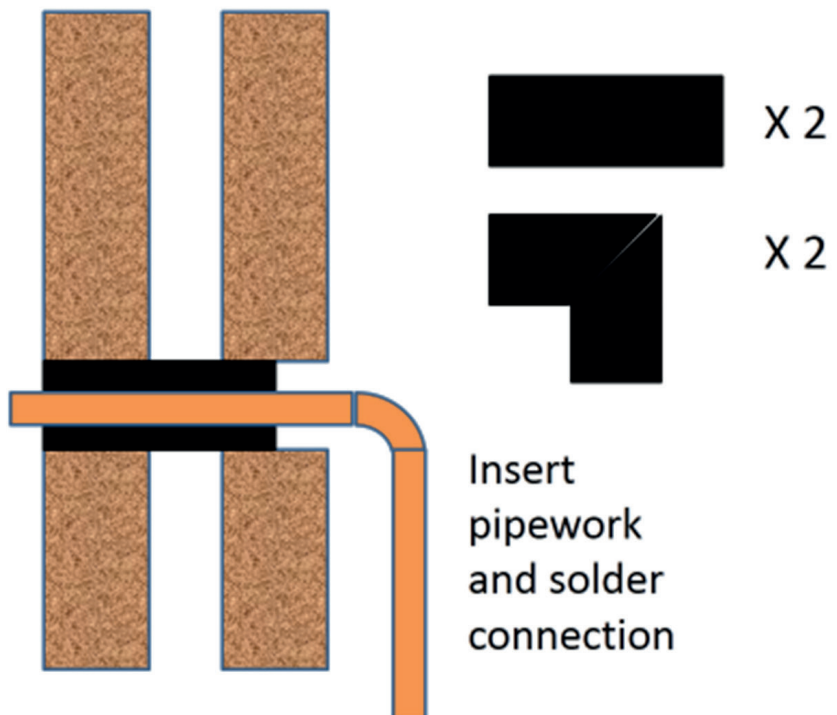
Step 2



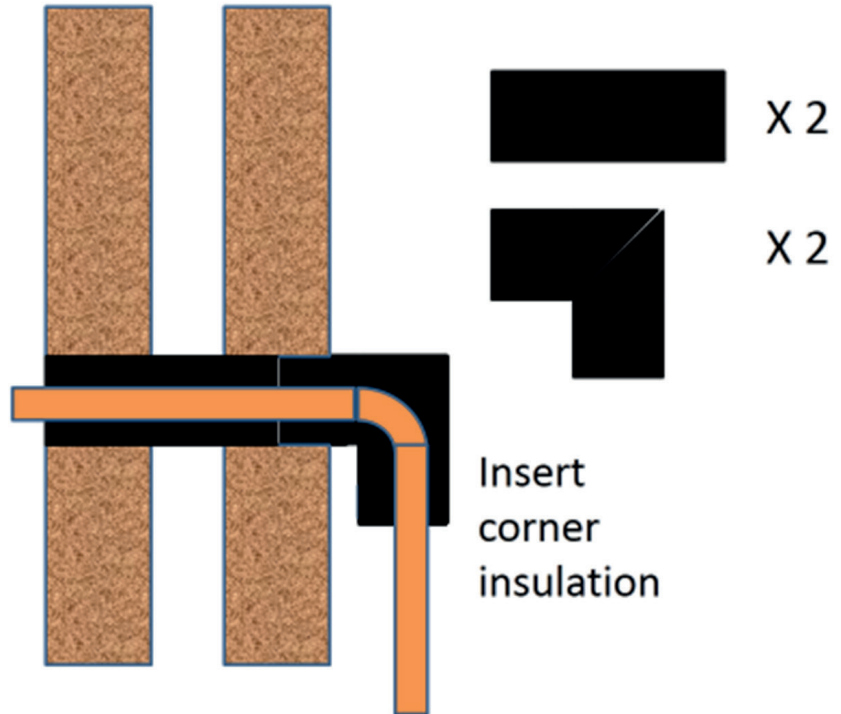
Step 3



Step 4



Step 5



Step 6

